



## Patient XP

**Support the relaxation and compliance of your patients during treatment through a comfortable treatment atmosphere.**

Music triggers goosebumps, slows down heartbeat and muscle tone, pleasant light supports a relaxed posture. With Patient XP you create an individual, pleasant treatment atmosphere in what is actually a clinically sterile treatment environment. As a radiation therapy expert, you know what challenges and complaints your patients have to deal with and how important a relaxed and cooperative attitude is for smooth treatment. Patient XP includes a selection of different music and the possibility to connect external audio data carriers and also provides the full color spectrum of the rainbow for the lighting of your treatment room.

With just a few touches of your finger on the Smart Manager terminal, you can either create a patient-specific treatment ambience or select one of the 6 possible presets. Patient XP can be implemented for initial equipment, when replacing devices or as a retrofit.

We will discuss the details with you and accompany you through to commissioning. After a short briefing, you can use Patient XP immediately and show your patients that not only medical well-being is important to you, but also personal well-being during treatment.

**Important notes:** The respective technical specification and the user manual must be observed for proper and intended use.

### Your added value

- Quick and easy creation of a patient-specific treatment atmosphere
- Convenient selection of presets
- Increase a positive patient perception
- Playing your own music from your personal device
- Additional features for patient well-being and safety can be integrated as an option

### For your patients

- Distraction from the clinical atmosphere and more relaxation
- Active influence on the treatment environment by selecting music and light settings

### You receive

- 1 Smart Manager Terminal for setting and operation
- 1 Door Terminal
- 4 Ambient Lighting Panels with Dalibox
- 2 Inroom Speaker
- Core Performance Platform incl. Interoperability Agent
- Additional features are optionally available

### Functions

- Selection of thematic presets
- Individual setting of light colour, brightness and music
- Integration of web content (e.g. radio stations)
- Intuitive and simple operation via touch

Patient XP consists of a configuration of hardware and software components that are fully described in the Technical Specification.

Furthermore, the transport and storage conditions, the installation and operating requirements are described. The intended purpose and the intended use for Patient XP can be found in the user manual.

The user interface is available in several languages.

**Flex**  
**Patient XP**  
OP-SAS-PXP-RT-0001

**OPASCA GmbH**  
Franz-Volhard-Str. 3  
68167 Mannheim  
Germany

Phone: +49 (0) 621 877537-10  
E-Mail: kontakt@opasca.com  
opasca.com



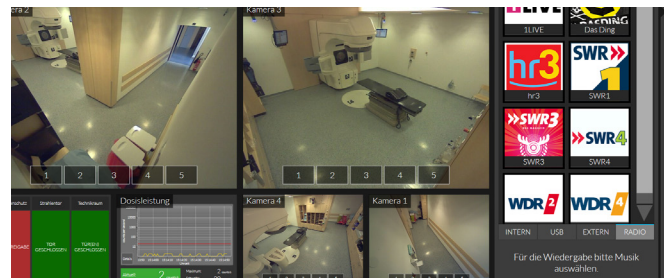
## Best-of-AddOns for Patient XP

The advantages of an OPASCA solution are obvious: You decide on the combination of the individual features that correspond to the individual requirements of your everyday clinical work. Thanks to the diverse combination options and interoperability within our solutions, but also due to the use of standardized interfaces to third-party systems, you benefit from seamless integration and maximum efficiency that make your everyday work easier. Below you will find the best possible AddOns that other OPASCA users have chosen:



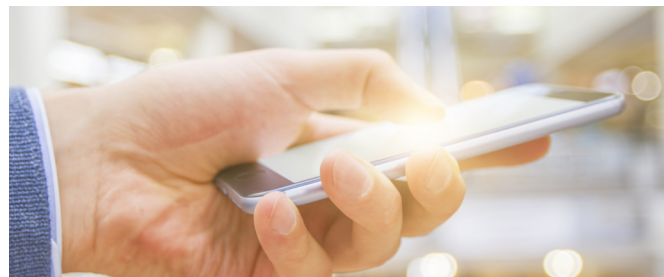
EXT-INC-0001  
**Intercom**

Interference-free, bidirectional speech and hearing connection between the treatment room and the workstation ensures perfect communication between the staff and the patient.



EXT-RAS-0001  
**Radio Streaming**

Integration of internet music streams (web stream and internet access must be provided by the customer)



EXT-EMS-0001  
**External Music Source**

Connection option for external audio data carriers (e.g. smartphone, iPod)



EXT-UMS-0001  
**USB Music Play**

Connection option for USB sticks to play audio content stored on them



EXT-AMD-0001  
**Ambient Diashow**

As a complement to Ambient Music and Ambient Lighting, the Ambient Diashow designs an individual thematic varied treatment experience that contributes to relaxation.

## Best-of-AddOns for Patient XP



EXT-PAV-0001  
**Patient Validation**

Reliable avoidance of misidentification: Reliable and automated patient validation based on biometric facial recognition.



EXT-FTF-0001  
**Face to Face**

With Face to Face you enable the personal care of your patients even if they are physically separated. The audiovisual communication solution has a positive effect on cooperation, reduces stress and thus the need for anesthesia, and also enables accompanying persons to be involved.



EXT-DOT-0001  
**Door Terminal**

Make sure that you also have access to safety-relevant information such as camera images or current radiation at the entrance to the treatment room.



EXT-GAF-0001  
**Gating Feedback**

Gating Feedback maximizes patient cooperation for breath-controlled radiation (e.g. DIBH) and guides the patient contactlessly and intuitively through the breathing curves. Radiation times are reduced, operation is completely automatically through an integrated interface to the existing gating system.

**Flex**  
**Patient XP**  
OP-SAS-PXP-RT-0001